

GENERAC®

POWER SYSTEMS, INC.

Owner's Manual

GUARDIAN™

by GENERAC® POWER SYSTEMS

Liquid-cooled, Prepackaged
Standby Generators

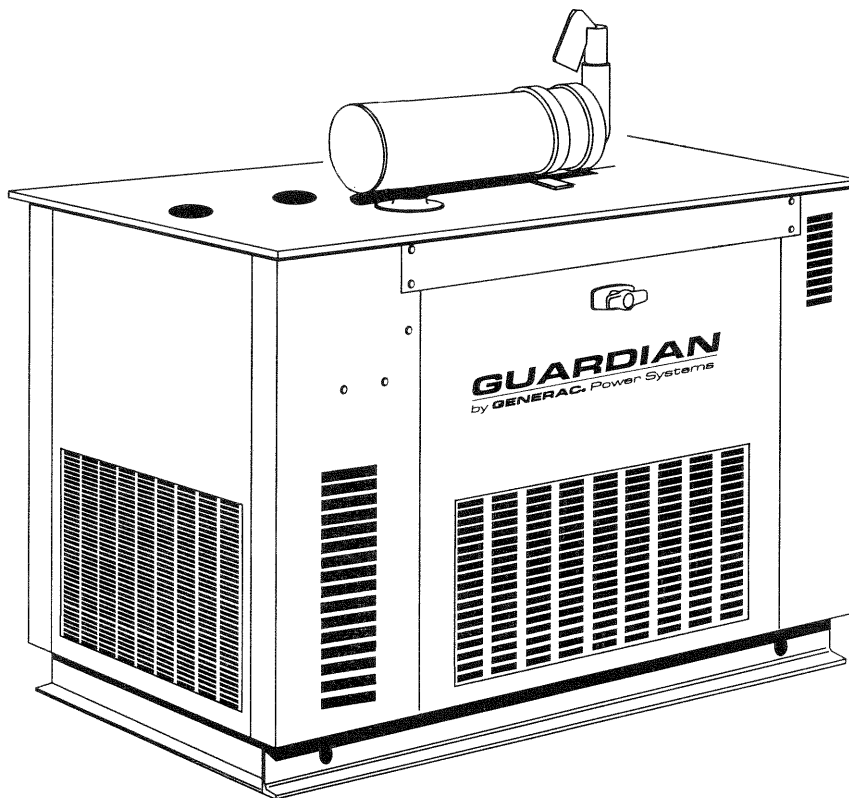
Model Numbers

(Natural Gas)

00907-2	00911-2
00908-2	00912-2
00909-2	00913-2
00910-2	00914-2

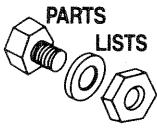
(Liquid Propane Vapor)

04112-0	04116-0
04113-0	04117-0
04114-0	04118-0
04115-0	04119-0



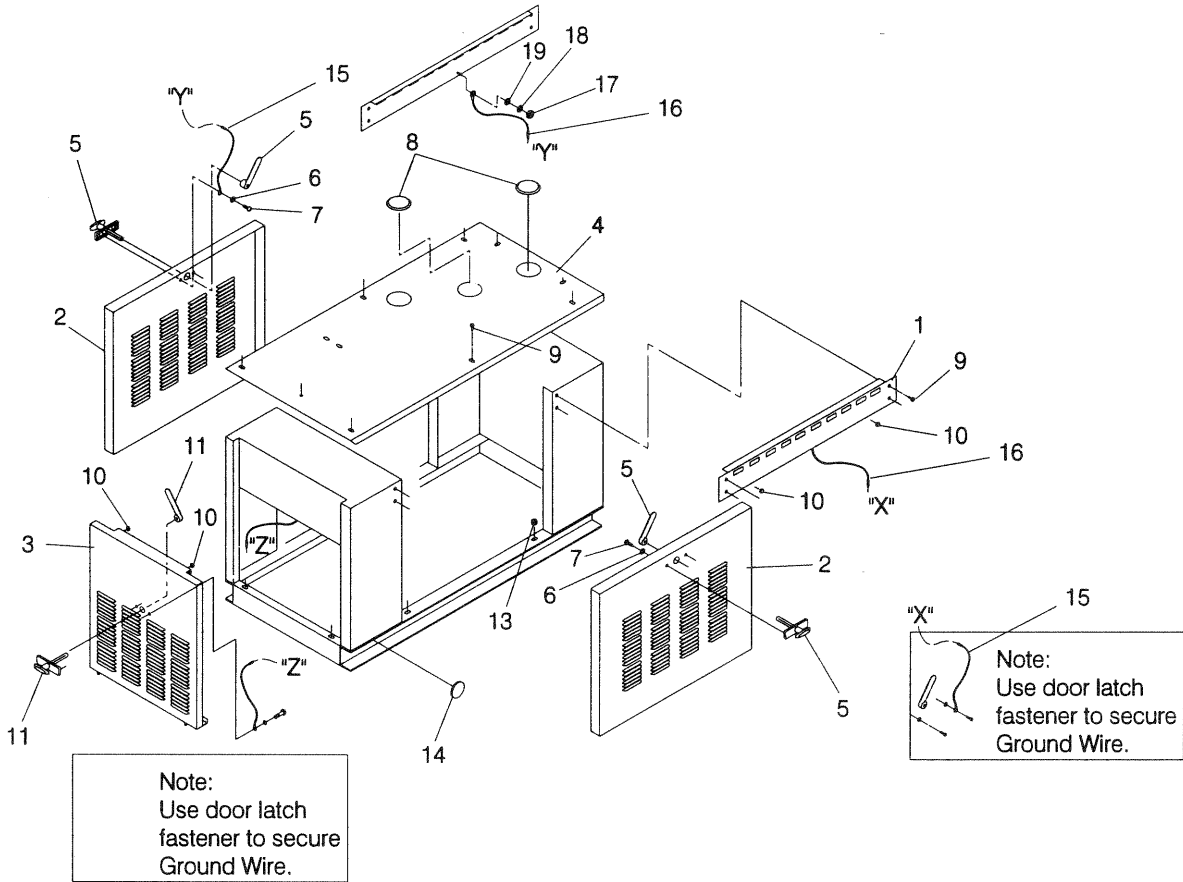
—▲ **DANGER** ▲—

ONLY QUALIFIED ELECTRICIANS OR CONTRACTORS
SHOULD ATTEMPT INSTALLATION!!



Section 7 – Exploded Views and Parts Lists

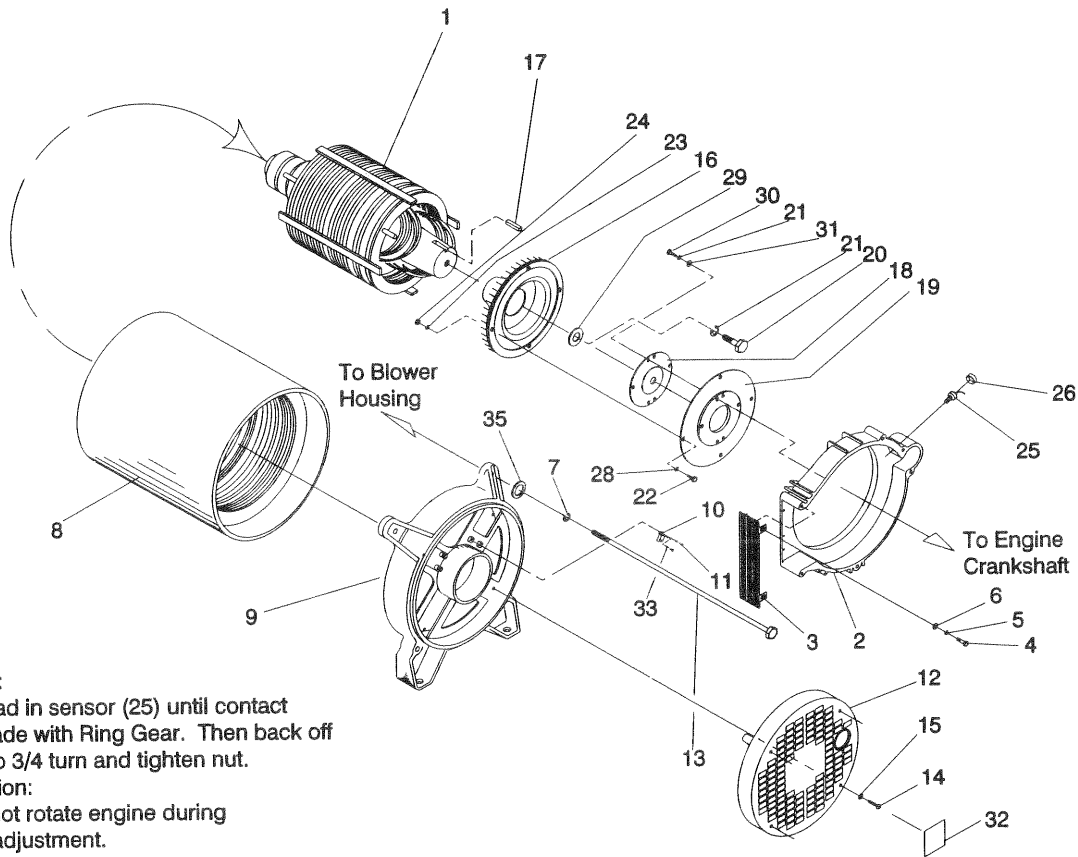
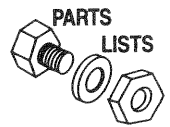
Guardian Liquid-cooled 10 kW, 15 kW, 20 kW and 25 kW Generators
Compartment – Drawing No. A7188-D



ITEM	PART NO.	QTY.	DESCRIPTION
------	----------	------	-------------

1	97575	2	BRACE, SIDE
2	A3769	2	DOOR, ENCLOSURE
3	A3768	1	DOOR, ENCLOSURE
4	A5314	1	TOP, ENCLOSURE
5	67042	2	LATCH
6	22264	6	LOCK WASHER, #8
7	67035	6	SCREW, PAN HEAD MACH.-#8-32 x 5/16"
8	82570	2	PLUG-4"
9	A7215	10	SWAGE FASTENER-W/NYLON WASHER
10	32990	6	BUMPER
11	C2164	1	LATCH
13	29107	6	GROMMET 3/16"-7/8"
14	A1694	5	BUTTON-PLUG 1-1/2"
15	91297-063	3	GROUND WIRE ASSEMBLY
16	91297-064	3	GROUND WIRE ASSEMBLY
17	49813	3	HEX NUT M6 x 1.0
18	70005	3	LOCK WASHER M6
19	49811	3	FLAT WASHER M6

Section 7 – Exploded Views and Parts Lists
Guardian Liquid-cooled 10 kW, 15 kW, 20 kW and 25 kW Generators
Generator – Drawing No. A9348-A

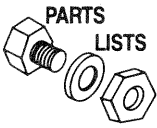


Note:
 Thread in sensor (25) until contact is made with Ring Gear. Then back off 1/2 to 3/4 turn and tighten nut.

Caution:
 Do Not rotate engine during this adjustment.

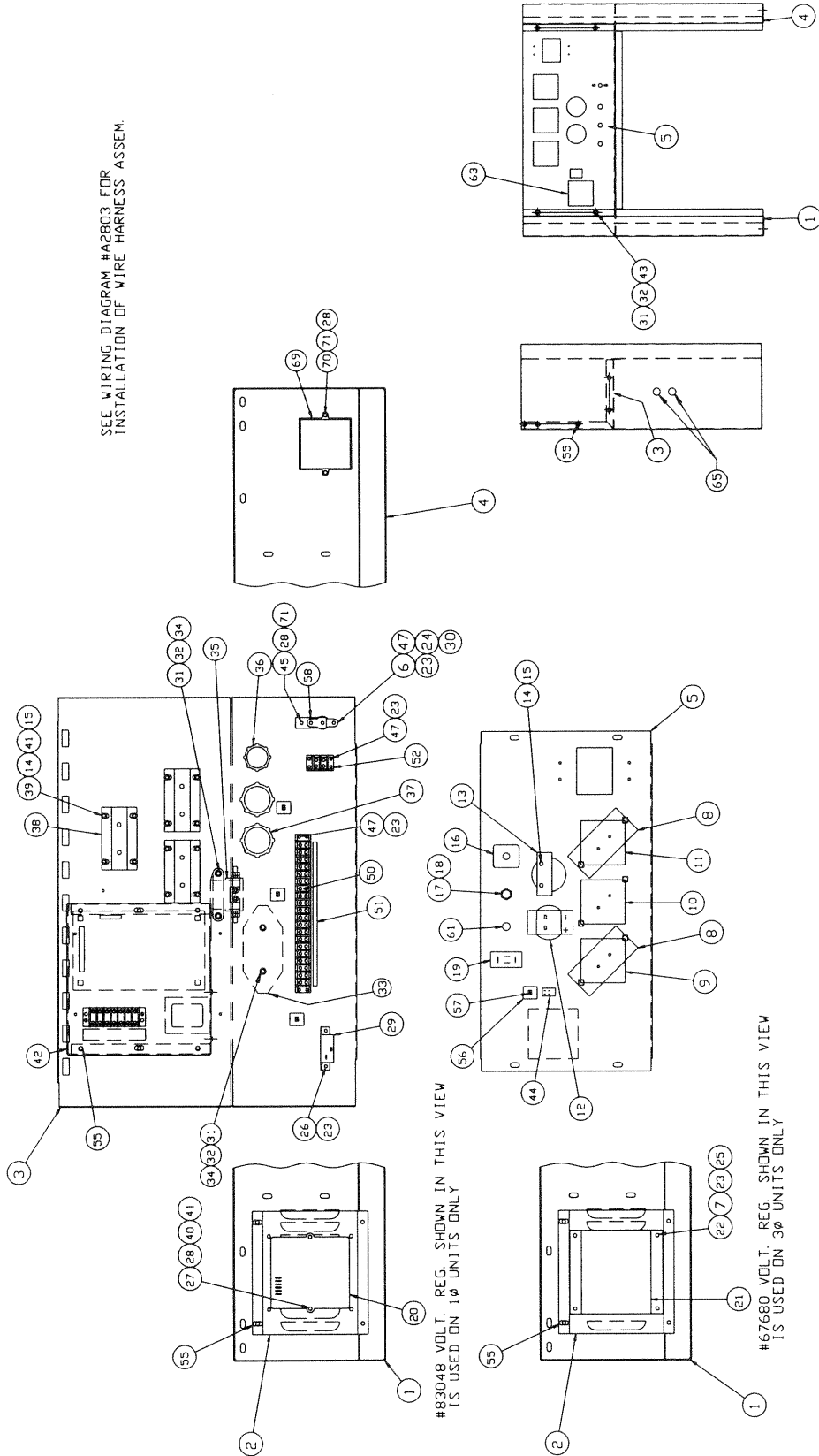
ITEM	PART NO.	QTY.	DESCRIPTION	ITEM	PART NO.	QTY.	DESCRIPTION
1	98671	1	ROTOR ASSEM.-10KW	13	75554B	4	BOLT, STATOR
	98681	1	ROTOR ASSEM.-15KW	14	A9375	4	#10-24 x 2" RHMS
	98675	1	ROTOR ASSEM.-20KW	15	22152	4	LOCK WASHER-#10
	98936	1	ROTOR ASSEM.-25KW	16	97146	1	FAN & RING GEAR ASSEM.
2	A5336A	1	HOUSING, BLOWER	17	42558	1	KEY-3/8" SQUARE x 1" LONG
3	A1659	1	SCREEN, AIR OUTLET	18	A5061	1	SPACER-FLEX PLATE
4	71912	4	CAPSCR., HEX HD.-M5-0.8 x 8	19	A4989	1	PLATE, FLEX
5	22152	4	LOCK WASHER-#10	20	52213	1	CAPSCR., HEX HEAD-M10-1.25 x 20
6	51713	4	FLAT WASHER-M5	21	51769	6	LOCK WASHER-M12
7	22129	4	LOCK WASHER-M8 (5/16")	22	49541	4	CAPSCR., HEX HD.-M10-1.5 x 35
8	98672	1	STATOR ASSEM.-10KW-1-PHASE A	23	46526	4	LOCK WASHER-M10
	98673	1	STATOR ASSEM.-10KW-3-PHASE D	24	45772	4	NUT, HEX-M10-1.5
	98674	1	STATOR ASSEM.-10KW-3-PHASE GJK	25**	82130B	1	MPU, SPEED SENSOR, RPM
	98682	1	STATOR ASSEM.-15KW-1-PHASE A	26*	87599	1	PLUG, PLASTIC
	98683	1	STATOR ASSEM.-15KW-3-PHASE D	27	77043E	1	FLEX GUARD 1" I.D. x 10" LONG (NOT SHOWN)
	98684	1	STATOR ASSEM.-15KW-1-PHASE GJK				
	98676	1	STATOR ASSEM.-20KW-1-PHASE A	28	49809	4	FLAT WASHER-M10
	98677	1	STATOR ASSEM.-20KW-1-PHASE D	29	72578	1	WASHER-ROTOR SHAFT
	98678	1	STATOR ASSEM.-20KW-1-PHASE GJK	30	A7043	5	CAPSCREW, M12-1.25 x 25
	97620	1	STATOR ASSEM.-25KW-1-PHASE A	31	49808	5	FLAT WASHER M12
	98937	1	STATOR ASSEM.-25KW-1-PHASE D	32	58589	1	DECAL-WARNING
	97621	1	STATOR ASSEM.-25KW-1-PHASE D	33	23365	4	STAR WASHER-#8
9	A5382	1	CARRIER, REAR BEARING	35	A8830	4	WASHER .34-.75 x .125 LONG
10	75591	1	HOLDER, BRUSH ASSEM.				
11	52813	4	SCREW, HEX HD.-M4-0.7 x 20				
12	A5601	1	COVER, REAR BEARING CARRIER				

*USED ON PREPACKAGED UNITS ONLY
 **USED ON "C" OPTION PANEL UNITS ONLY



Section 7 – Exploded Views and Parts Lists

Guardian Liquid-cooled 10 kW, 15 kW, 20 kW and 25 kW Generators Control Panel – Drawing No. A2872-D



SEE WIRING DIAGRAM #A2803 FOR
INSTALLATION OF WIRE HARNESS ASSEM.

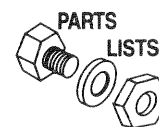
#83048 VOLT. REG. SHOWN IN THIS VIEW
IS USED ON 1 ϕ UNITS ONLY

#67680 VOLT. REG. SHOWN IN THIS VIEW
IS USED ON 3 ϕ UNITS ONLY

P/N	PHASE	ITEM 7	ITEM 14	ITEM 15	ITEM 20	ITEM 21	ITEM 22	ITEM 23	ITEM 25	ITEM 27	ITEM 28	ITEM 39	ITEM 40
A2856	1 ϕ	P/N 22985	P/N 22152	P/N 22158	P/N 83048	P/N 67680	P/N 75476	P/N 22264	P/N 51715	P/N 76039	P/N 51756	P/N 33121	P/N 49226
A2856A	3 ϕ	QTY. 4	QTY. 14	QTY. 12	QTY. 1	QTY. 1	QTY. 4	QTY. 8	QTY. 4	QTY. 2	QTY. 5	QTY. 4	QTY. 2

Section 7 – Exploded Views and Parts Lists

Guardian Liquid-cooled 10 kW, 15 kW, 20 kW and 25 kW Generators Control Panel – Drawing No. A2872-D



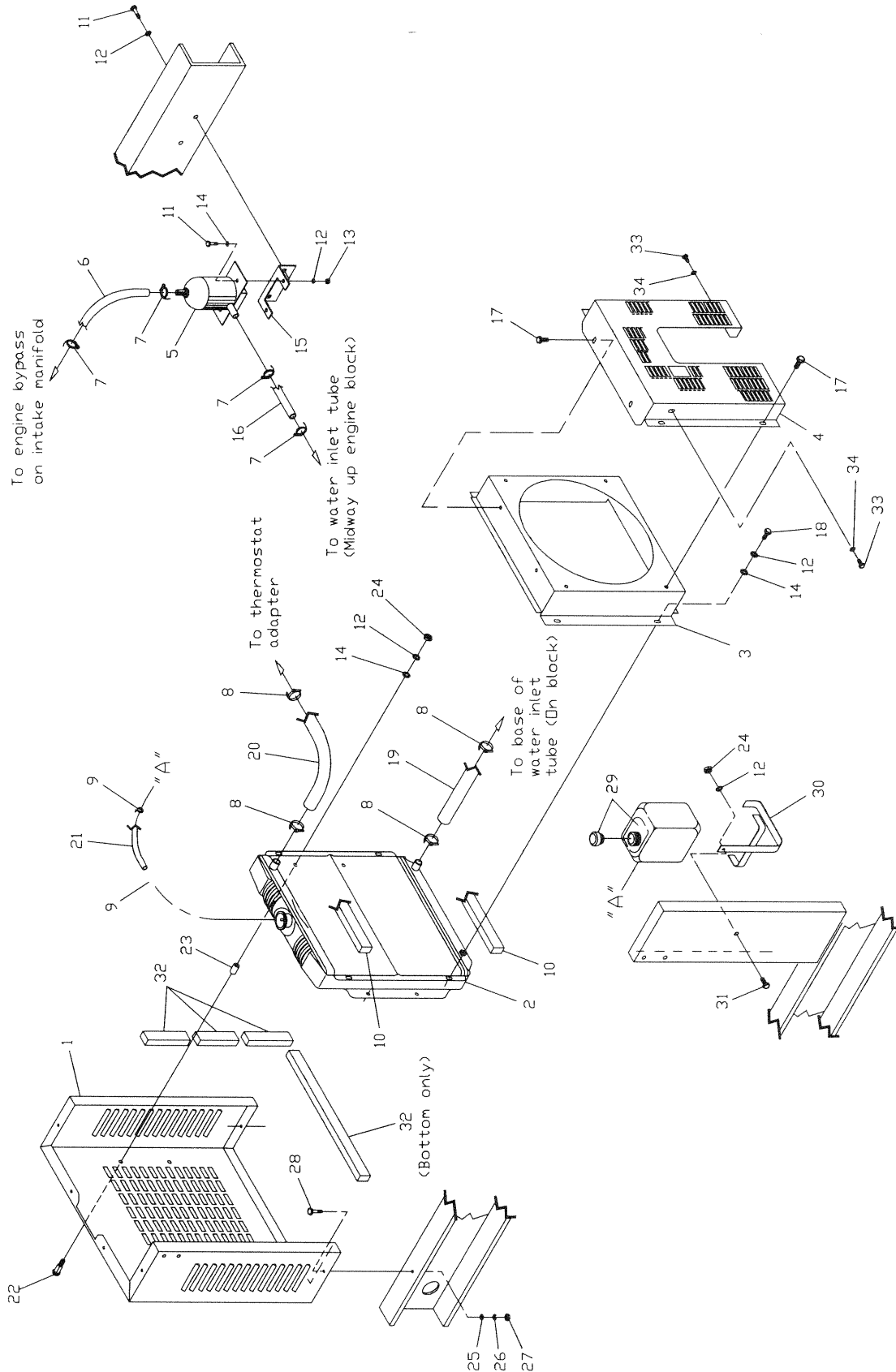
ITEM	PART NO.	QTY.	DESCRIPTION	ITEM	PART NO.	QTY.	DESCRIPTION
1	98062	1	SUPPORT, CONTROL PANEL	33	A1354A	1	DC VOLTAGE REGULATOR
2	75589	1	BRACKET, VOLTAGE REGULATOR	34	43116	4	HHCS, M6-1.0 x 12MM
3	A1775	1	PANEL, CONTROL BOTTOM & BACK	35	56739	1	SOLENOID (SILVER)
4	98063	1	SUPPORT, CONTROL PANEL	36	C2512	1	WIRE CONNECTOR 1"
5	A2106	1	PANEL, CONTROL "P" OPTION	37	C2513	*2	WIRE CONNECTOR 1.25
6	57073	1	BLOCK, JUNCTION	38	61395	3	TRANSFORMER, CURRENT
7	22985	**	WASHER, FLAT #6		58318	2	TRANSFORMER (MODEL 913 ONLY)
8	70080	2	INSULATOR	39	33121	2	HEX HD. MACH. SCR. 10-32 x 1/2"
9	70043	1	VOLTMETER, AC 0-300	40	49226	2	WASHER, LOCK M5
10	70055	1	AMMETER, AC 0-100	41	23897	6	WASHER, FLAT #10
11	70042	1	METER, FREQUENCY (HERTZ)	42	75595	1	CMA BOX ASSEMBLY
12	70081	1	HOURLMETER	43	77438	4	SCREW, PHM M6 x 1.0 x 12MM
13	76037	1	VOLTMETER, DC	44	82573	1	ROCKER SWITCH
14	22152	**	WASHER, LOCK #10	45	55440	1	HHCS M5-0.8 x 25MM
15	22158	**	NUT, HEX #10-32	47	C2212	6	M4-.7 x 16 SWAGEFORM PPH
16	61945	1	SWITCH, AMP/VOLT SELECTOR	50	57335	1	TERMINAL STRIP
17	32300	1	HOLDER, FUSE	51	A7230	1	DECAL, TERMINAL STRIP
18	22668	1	FUSE, 30 AMP.	52	48766	1	BLOCK, TERMINAL STRIP
19	76020	1	SWITCH, ON/OFF/ON	55	A7215	14	1/4"-20 X 5/8" LG. SWAGEFORM
20	83048	**	REGULATOR, VOLTAGE ASSEMBLY	56	57593	4	MOUNT, CABLE TIE
21	67680	**	REGULATOR, VOLTAGE (3-PHASE)	57	28739	4	WRAP, TIE-4" LONG
22	75476	**	SCREW, PPHM M4-0.7 x 16MM	58	61979	1	BUS, BAR
23	22264	**	WASHER, LOCK-M4	59*	A2833	1	HARNESS, CONTROL PANEL 1 DIA.
24	22237	1	WASHER, LOCK 3/8"	60*	A2833A	1	HARNESS, CONTROL PANEL 3 DIA.
25	51715	**	NUT, HEX M4-0.7	61	64009	1	LAMP, FAULT INDICATOR
26	C2428	2	6-32 x 5/8" SWAGEFORM PPH	63	81988	1	DECAL SET-EXERCISE TIME
27	76039	**	SCREW, PPHM-M5-0.8 x 40MM	65	86381	2	CAPLUG, BPF-1/4"
28	51756	**	HHCS, M10-1.5 x 20	67*	36903	2	SCREW, PPHM 6-32 x 5/8
29	48476	1	C/B 4.5A. 1 DIA. MODELS ONLY	68*	22155	2	WASHER, LOCK M6
	54450	1	C/B 5.5A. 3 DIA. MODELS ONLY	69	98647	1	STEPPER MOTOR KIT
30	22241	1	HEX NUT 3/8"-16	70	76040	2	PPHMS, M5-0.8 x 16MM
31	22097	8	WASHER, LOCK M6	71	49226	2	WASHER, LOCK M5
32	22473	8	WASHER, FLAT M6				

*NOT SHOWN

**SEE CHART ON OPPOSITE PAGE

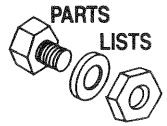
Section 7 – Exploded Views and Parts Lists

**Guardian Liquid-cooled 10 kW, 15 kW, 20 kW and 25 kW Generators
Radiator – Drawing No. A7206-A**

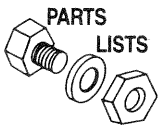


Section 7 – Exploded Views and Parts Lists

**Guardian Liquid-cooled 10 kW, 15 kW, 20 kW and 25 kW Generators
Radiator – Drawing No. A7206-A**

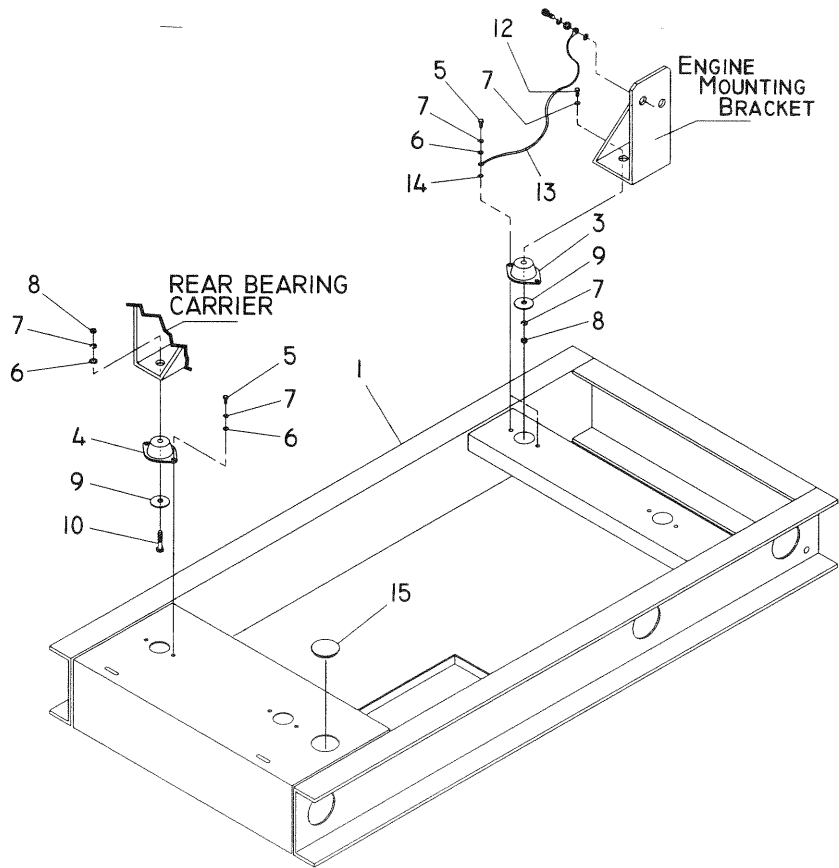


ITEM	PART NO.	QTY.	DESCRIPTION	ITEM	PART NO.	QTY.	DESCRIPTION
1	A6272	1	SUPPORT RADIATOR	19	A6284	1	HOSE, LOWER
2	A5734	1	RADIATOR	20	A6258	1	HOSE, UPPER
3	A6237	1	VENTURI	21	29032	1	HOSE - 9/32" I.D.
4	A6238	1	GUARD, FAN	22	31669	4	CARRIAGE BOLT - 1/4"-20 X 1-3/4"
5	84918	1	ENGINE HEATER	23	60035	4	SPACER - .41-.75-.87
6	50967	12"	HOSE - 5/8" I.D. (sold by foot)	24	22127	5	NUT, HEX - 1/4"-20
7	57823	4	CLAMP, HOSE #10	25	22145	4	WASHER, FLAT - M8
8	99502	4	CLAMP, HOSE #24	26	22129	4	WASHER, LOCK - M8
9	83709	2	SPRING CLAMP, HOSE #9	27	45771	4	NUT, HEX - M8-1.25
10	52250	14'	TAPE, FOAM 1" SQUARE	28	42907	4	CAPSCREW, HEX HEAD - M8-1.25 X 16
11	42568	4	CAPSCREW, HEX HEAD - M6-1.00 X 20MM	29	76749	1	BOTTLE, COOLANT RECOVERY
12	22097	13	WASHER, LOCK - M6	30	80712	1	BRACKET, BOTTLE
13	49813	2	NUT, HEX - M6-1.0	31	A7215	1	SWAGEFORM W/WASHER - 1/4"-20 X 5/8" LONG
14	22473	11	WASHER, FLAT - M6	32	A7275	6'	FOAM - CLOSED CELL
15	84427	1	BRACKET, ENGINE HEATER	33	A2111	2	10-32-5/16 FASTENER
16	50967	18"	HOSE - 5/8" I.D. (sold by foot)	34	65852	2	SPRING CLIP .37-.62
17	75443	6	CRIMPTITE - 1/4" X 20-5/8"				
18	56892	4	CRIMPTITE - 10-24 X 3/8"				



Section 7 – Exploded Views and Parts Lists

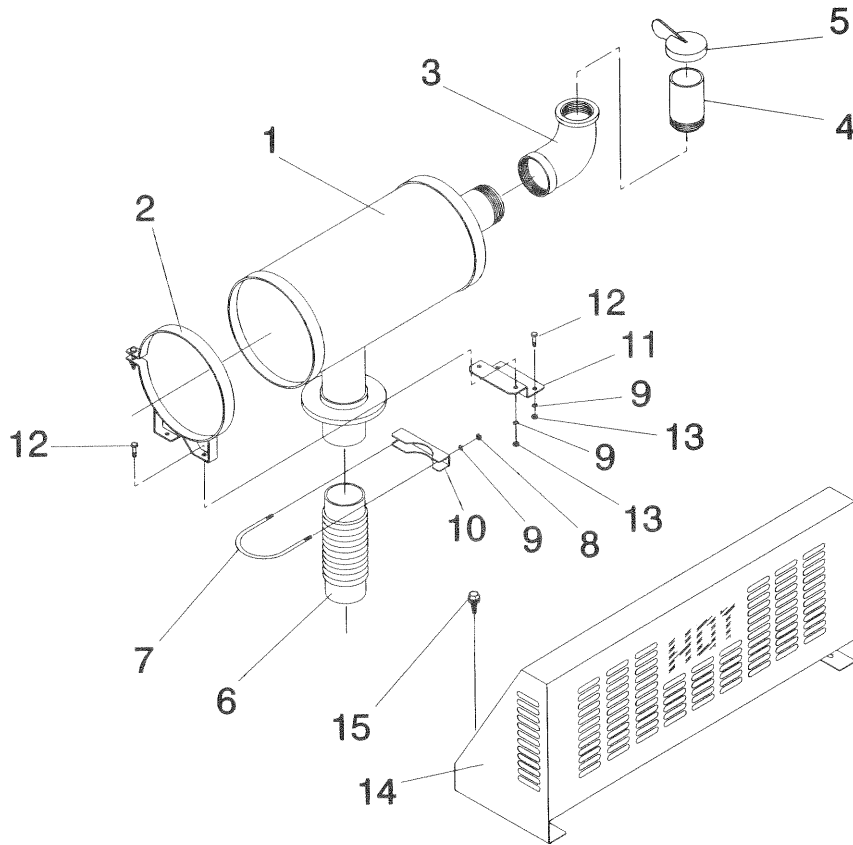
Guardian Liquid-cooled 10 kW, 15 kW, 20 kW and 25 kW Generators
Mounting Base – Drawing No. A7187-A



ITEM	PART NO.	QTY.	DESCRIPTION
------	----------	------	-------------

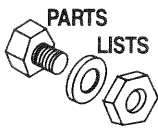
1	C2632	1	BASE, MOUNTING
3	70936	2	ISOLATOR-VIBRATION
4	70936C	2	ISOLATOR, VIBRATION
5	39253	8	CAPSCREW, HEX HEAD-M8-1.25 x 20MM
6	22145	12	FLAT WASHER-M8
7	22129	12	LOCK WASHER-M8
8	45771	12	NUT, HEX-M8-1.25
9	71956	4	WASHER, VIBRATION ISOLATOR
10	51730	2	CAPSCREW, HEX HEAD-M8-1.25 x 60MM
12	57821	2	CAPSCREW, HEX HEAD-M8-1.25 x 40MM
13	21991	1	STRAP, GROUNDING
14	27482	1	WASHER-STAR 5/16"
15	A2308	1	PLUG-BUTTON

Section 7 – Exploded Views and Parts Lists
Guardian Liquid-cooled 10 kW, 15 kW, 20 kW and 25 kW Generators
Muffler – Drawing No. A7618-A



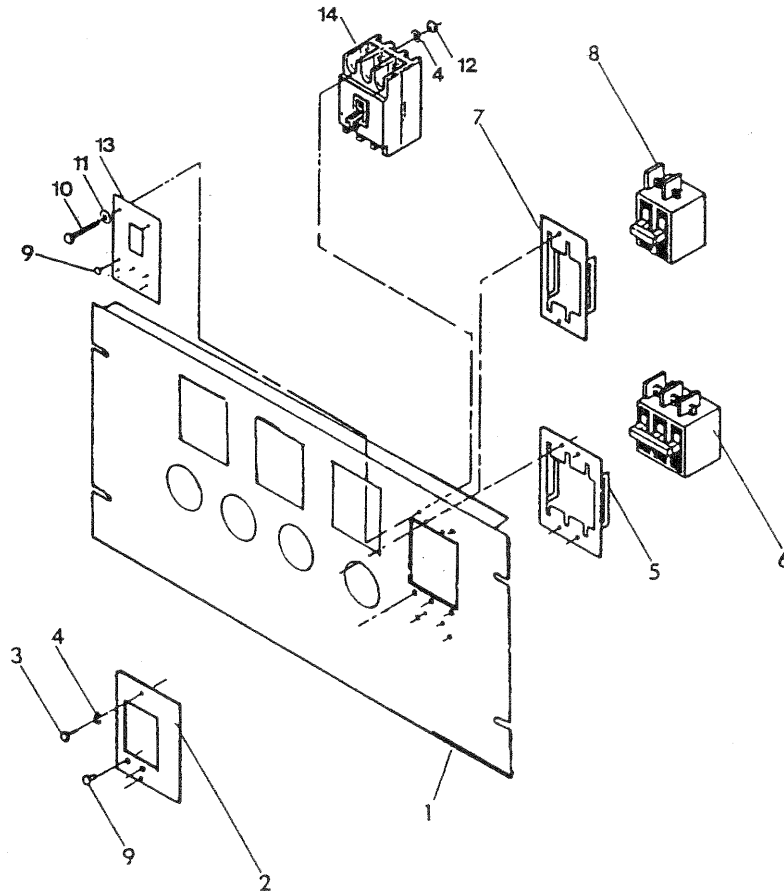
ITEM PART NO. QTY. DESCRIPTION

1	20689	1	MUFFLER
2	60366	1	STRAP, MUFFLER
3	59933	1	ELBOW, 90 DEGREE 2" NPT
4	80761	1	PIPE, 2" NPT x 4-1/2" LONG
5	59939	1	CAP, RAIN
6	75546A	1	PIPE, FLEX EXHAUST
7	36434	1	U-BOLT 2" I.D. 5/16"-18
8	22259	2	NUT, HEX 5/16-18
9	22129	6	WASHER, LOCK 5/16"-M8
10	36449	1	SADDLE-2"
11	76032	1	SUPPORT, MUFFLER
12	39253	4	CAPSCREW, HEX HEAD-M8-1.25 x 20MM
13	45771	4	NUT, HEX M8-1.25
14	C3683	1	GUARD, MUFFLER
15	A7215	4	1/4-20 x 5/8 W/WASHER



Section 7 – Exploded Views and Parts Lists

Guardian Liquid-cooled 10 kW, 15 kW, 20 kW and 25 kW Generators
Circuit Breaker – Drawing No. A3371-



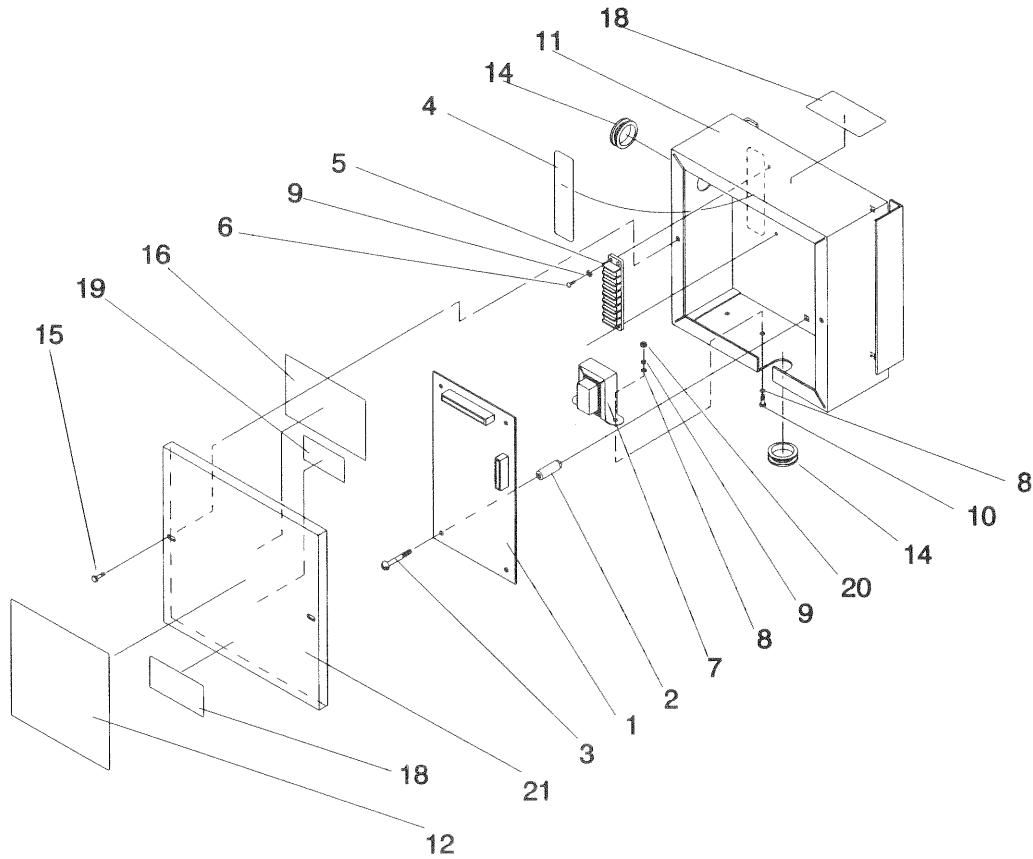
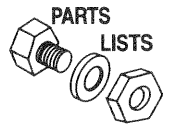
ITEM	PART NO.	QTY.	DESCRIPTION	ITEM	PART NO.	QTY.	DESCRIPTION
1	A2103	1	PANEL, CONTROL-"A"	57472	1	1	CIRCUIT BREAKER 30A 2P BQ2
	A2104	1	PANEL, CONTROL-"B"	77906	1	1	CIRCUIT BREAKER 35A 2P BQ2
	A2105	1	PANEL, CONTROL-"C"	43240	1	1	CIRCUIT BREAKER 40A 2P BQ2
	A2106	1	PANEL, CONT.-PRE-PACK	57905	1	1	CIRCUIT BREAKER 45A 2P BQ2
2*	A2052	1	COVER, CIRCUIT BREAKER	39765	1	1	CIRCUIT BREAKER 50A 2P BQ2
3	33130	-	HHMS #8-32 x 1/4" LONG	48373	1	1	CIRCUIT BREAKER 70A 2P BQ2
4	22264	-	WASHER, LOCK #8	63452	1	1	CIRCUIT BREAKER 80A 2P BQ2
5	39783	1	BRACKET, CB MTG. BQ3	39766	1	1	CIRCUIT BREAKER 90A 2P BQ2
6	47585	1	CIRCUIT BREAKER 30A 3P BQ3	48374	1	1	CIRCUIT BREAKER 100A 2P BQ2
	57906	1	CIRCUIT BREAKER 35A 3P BQ3	A2077	1	1	CIRCUIT BREAKER 125A 2P BQ2
	56783	1	CIRCUIT BREAKER 40A 3P BQ3	9	56967	3	PLUG, PLASTIC-.37 DIA.
	49942	1	CIRCUIT BREAKER 50A 3P BQ3	10	53640	4	SCREW, RD. HD. MACH.- #8-32 x 3-1/4" LONG
	40533	1	CIRCUIT BREAKER 60A 3P BQ3	11	38150	4	WASHER, FLAT-#8
	49135	1	CIRCUIT BREAKER 70A 3P BQ3	12	22471	4	NUT, HEX-#8-32
	62812	1	CIRCUIT BREAKER 80A 3P BQ3	13+	A2670	1	COVER, CIRCUIT BREAKER
	53691	1	CIRCUIT BREAKER 90A 3P BQ3	14	A2820	1	MCB 16AMP. 3-POLE 480V BTR
	40532	1	CIRCUIT BREAKER 100A 3P BQ3	A2821	1	1	MCB 16AMP. 3-POLE 480V BTR
7	39782	1	BRACKET, C/B MTG. BQ2	A2822	1	1	MCB 16AMP. 3-POLE 480V BTR
8	76640	1	CIRCUIT BREAKER 20A 2P BQ2	A2828	1	1	MCB 16AMP. 3-POLE 480V BTR
	57903	1	CIRCUIT BREAKER 25A 2P BQ2				

*USE WITH ITEMS 8 ONLY
+USE WITH ITEM 14 ONLY

NOTE:

See Section 1.5, "Main Circuit Breaker," on Page 5 to determine the proper breaker for your unit.

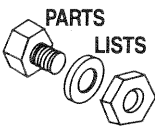
Section 7 – Exploded Views and Parts Lists
Guardian Liquid-cooled 10 kW, 15 kW, 20 kW and 25 kW Generators
CMA Assembly – Drawing No. 81086-C



ITEM	PART NO.	QTY.	DESCRIPTION
1	76009A	1	BOARD, CIRCUIT-DC CONTROL/ CRANK LATCH
2	72566	4	STANDOFF, CIRCUIT BOARD SUPPORT
3	80882	4	SCREW, PPH TAPPING #6 x 5/8"
4	74978	1	DECAL, TERMINAL STRIP
5	47822	1	BLOCK, TERMINAL STRIP
6	75476	2	SCREW, PPHM M4-0.7 x 16MM
7	83264	1	TRANSFORMER 24VA. 12 SEC
8	22985	4	WASHER, FLAT M4
9	22264	4	WASHER, LOCK M4
10	51787	2	HHCS M4-0.7 x 16
11	79847	1	BOX, CMA

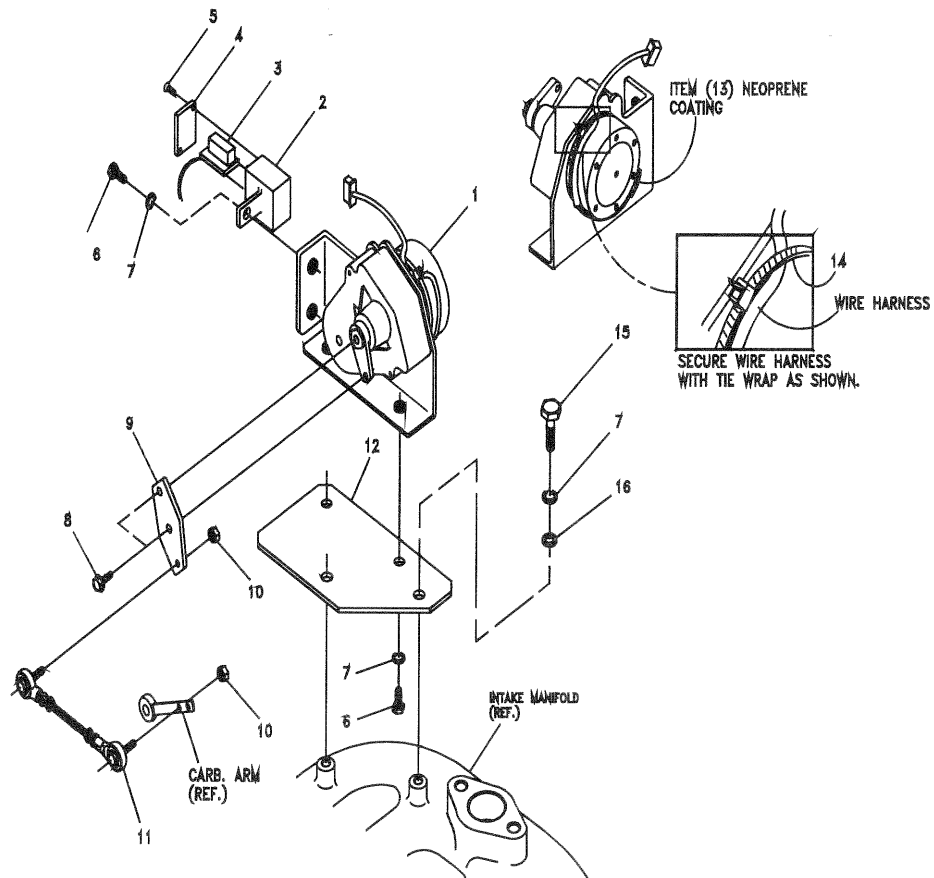
ITEM	PART NO.	QTY.	DESCRIPTION
12	A8504	1	DECAL, COVER-CMA (MODEL 921, 863, 865)
	A8504A	1	DECAL, COVER-CMA (MODEL 9428)
13*	22661V	.083'	HEAT SHRINK RED .19
14	38057	2	GROMMET
15	58443	2	CRIMPTITE
16	81224	1	DECAL, MFG NAMEPLATE
17*	79682	1	WIRE HARNESS
18	86093	2	DECAL, CMA WARNING
19	83736	1	DECAL, CSA
20	51715	2	NUT, HEX M4-0.7
21	74495	1	COVER, CMA BOX (921, 863, 865, 9428)
	77401	1	COVER, SILKSCREENED

*NOT SHOWN



Section 7 – Exploded Views and Parts Lists

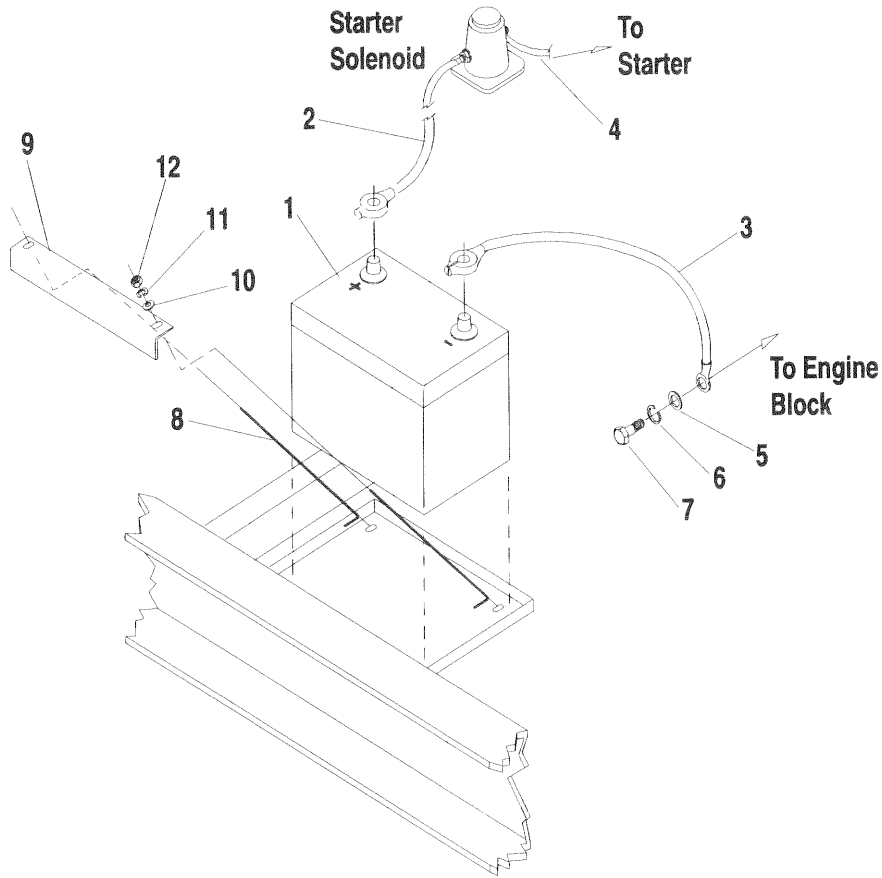
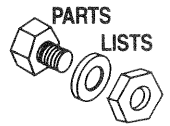
Guardian Liquid-cooled 10 kW, 15 kW, 20 kW and 25 kW Generators
Governor Assembly – Drawing No. A7216-



ITEM PART NO. QTY. DESCRIPTION

1	98290	1	STEPPER MOTOR ASSEMBLY
2	98941A	1	HOUSING-CONNECTOR INTERFACE
3	98958A	1	CONNECTOR INTERFACE ASSY.
4	98942A	1	COVER-INTERFACE HOUSING
5	98225	2	FHMS-#2 x 5/8" SELF TAP
6	43146	3	HHMS-M6-1.0 x 10 LONG
7	22097	5	LOCK WASHER-M6
8	64526	2	HHMS-#6-32 x 3/8" SELF TAP
9	98783	1	LEVER-STEPPER MOTOR
10	37398	2	NUT NYLOK HEX-#10-32
11	A7041	1	CARBURETOR LINKAGE ASSY.
12	A7106	1	BRACKET-STEPPER MOTOR
13	74031	—	NEOPRENE COATING
14	29333A	1	TIE WRAP-7" BLACK
15	22507	2	HHCS-1/4"-20 x 1/2" LONG
16	22473	2	FLAT WASHER-1/4"

Section 7 – Exploded Views and Parts Lists
Guardian Liquid-cooled 10 kW, 15 kW, 20 kW and 25 kW Generators
Battery – Drawing No. 98922-

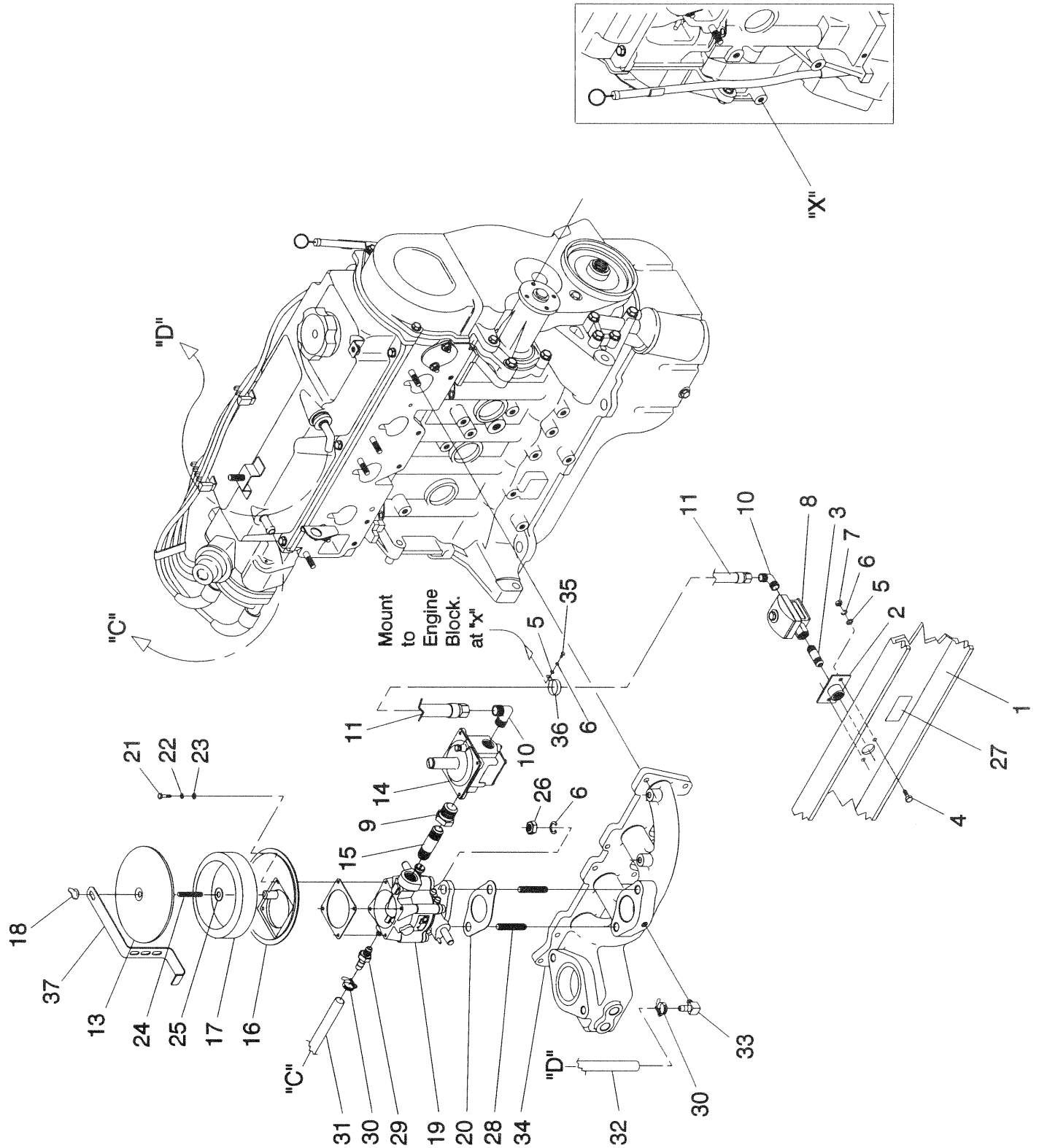


ITEM PART NO. QTY. DESCRIPTION

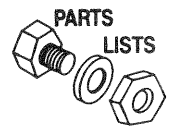
1	77483	1	BATTERY, 12VDC 75-AH GROUP 26
2	38804-D	1	CABLE, BATTERY-RED, 20"
3	38805-B	1	CABLE, BATTERY-BLACK, 23"
4	131-74260	1	CABLE, RED 29"
5	22131	1	WASHER, FLAT-M10
6	46526	1	WASHER, LOCK-M10
7	52213	1	HEX HD. CAPSCREW, M10-1.25 x 20 LONG
8	59567	2	J-BOLTS, BATTERY HOLD-DOWN
9	78121	1	BAR, HOLD-DOWN
10	22145	2	WASHER, FLAT-5/16"
11	22129	2	WASHER, LOCK-5/16"
12	22259	2	NUT, HEX-5/16"-18

Section 7 – Exploded Views and Parts Lists

**Guardian Liquid-cooled 10 kW, 15 kW, 20 kW and 25 kW Generators
Natural Gas Fuel System – Drawing No. A9349-B**



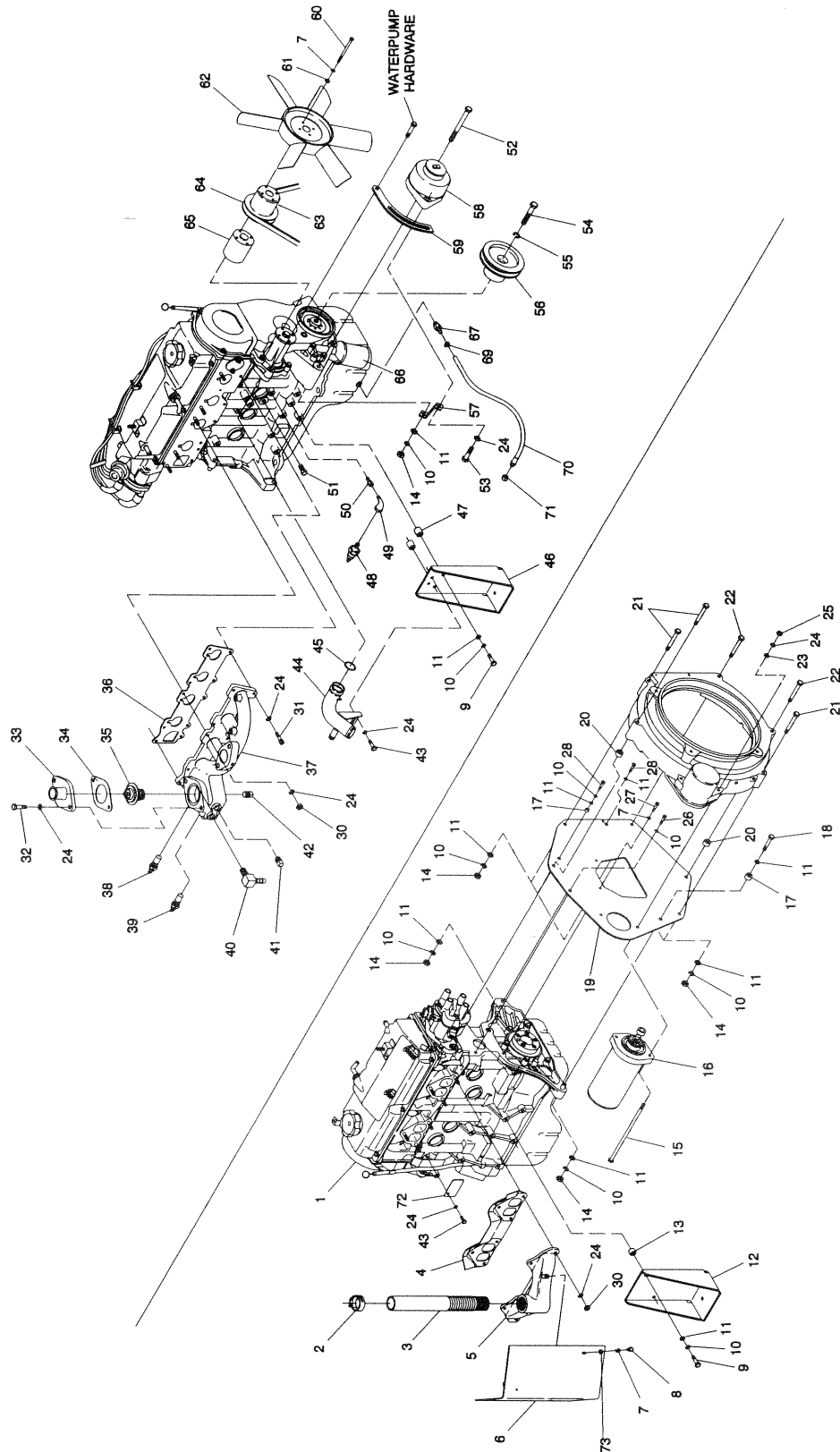
Section 7 – Exploded Views and Parts Lists
Guardian Liquid-cooled 10 kW, 15 kW, 20 kW and 25 kW Generators
Natural Gas Fuel System – Drawing No. A9349-B



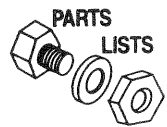
ITEM	PART NO.	QTY.	DESCRIPTION	ITEM	PART NO.	QTY.	DESCRIPTION
1	C2632	1	WELDMENT MOUNTING BASE	20	59401	1	GASKET-CARBURETOR
2	75580	2	FLANGE, FUEL INLET	21	34154	4	PHMS-#10-24 x 1/2"
3	26915	3	C/O NIPPLE, 3/4" NPT	22	22152	4	WASHER, LOCK #10
4	39253	4	CAPSCREW, HEX HD.-M8-1.25 x 20MM	23	23897	4	WASHER, FLAT #10-M5
5	22145	5	FLAT WASHER 5/16"-M8	24	62522	1	STUD 1/4"-20 x 3" LONG
6	22129	7	LOCK WASHER 5/16"-M8	25	22127	1	1/4"-20 HEX NUT
7	45771	4	NUT, HEX M8-1.25	26	22259	2	5/16"-18 HEX NUT
8	A2666	2	SOLENOID, GAS FUEL	27	50280	1	DECAL, FUEL INLET LPG
9	46747	1	BUSHING, RED 3/4" x 3/8"	28	A6125	2	STUD 5/16"-18 x 1-1/4" LONG
10	C3117	1	ELBOW, 3/4" TO 1/2" NPT	29	52219	1	BARB STRAIGHT 1/8" NPT x 5/16"
11	C3714	1	HOSE ASSEMBLY NG / LPG (1.5L)	30	48031C	3	HOSE CLAMP-BAND 1/4"
13	A5547	1	COVER, AIR CLEANER	31	29032	6-1/2"	HOSE 9/32" I.D. BUNA N
14	C1475	1	REGULATOR, NAT. GAS EM 1.5L	32	29032	11"	HOSE 9/32" I.D. BUNA N
	A9911	1	REGULATOR, L.P. VAPOR EM 1.5L	33	32552	1	BARB FITTING 90 DEG. 5/16" x 1/8" NPT
15	A7989	1	NIPPLE, 3/8" x 4" LONG	34	A4682	1	MANIFOLD-INTAKE 1.5
16	A6593	1	ADAPTOR, CARBURETOR	35	42907	1	HHCS-M8-1.25 x 16 LONG
17	59402	1	FILTER ELEMENT	36	55934D	1	CLAMP 1-1/16" x 13/32"
18	37561	1	WING NUT 1/4"-20 NYLOK	37	A7040	1	BRACKET-RADIATOR HOSE
19	59403	1	CARBURETOR CA55 EM				

Section 7 – Exploded Views and Parts Lists

**Guardian Liquid-cooled 10 kW, 15 kW, 20 kW and 25 kW Generators
Engine Compartment – Drawing No. A7642-E**



Section 7 – Exploded Views and Parts Lists
Guardian Liquid-cooled 10 kW, 15 kW, 20 kW and 25 kW Generators
Engine Compartment – Drawing No. A7642-E



ITEM	PART NO.	QTY.	DESCRIPTION	ITEM	PART NO.	QTY.	DESCRIPTION
1	A4531	1	ENGINE-1.5L	39	A6751	1	SWITCH-WATER TEMPERATURE
2	35685	1	CLAMP-HOSE-#28	40	34339	1	FITTING-HOSE BARB 3/8"P x 5/8"H
3	75546A	1	PIPE-FLEX EXHAUST	41	26925	1	FITTING-PIPE PLUG-3/8" NPT
4	258-A4531	1	GASKET-EXHAUST MANIFOLD	42	61012	1	FITTING-PIPE PLUG-1/8" NPT
5	A4355	1	MANIFOLD-EXHAUST	43	39253	6	HHCS-M8-1.25 x 20 LG.
6	A6699	1	SHIELD-HEAT	44	A5110	1	TUBE-WATER INLET
7	22097	8	WASHER-LOCK-1/4"	45	A7006	1	SEAL- O-RING
8	22057	2	HHCS-1/4"-20 x 1/2" LG.	46	A4862	1	LEG-RIGHT ENGINE SUPPORT
9	52212	4	HHCS-M10-1.25 x 25 LG.	47	22500B	2	SPACER-.41-.75-.25"
10	46526	14	WASHER-LOCK-M10	48	A8584	1	SWITCH-OIL PRESSURE
11	22131	16	WASHER-FLAT-M10	49	36277	1	FITTING-STREET ELBOW-1/8" NPT
12	A4863	1	LEG-LEFT ENGINE SUPPORT	50	42574	1	ADAPTER-OIL PRESSURE SWITCH
13	55993	1	SPACER-.41-.75-.12"	51	26073A	1	FITTING-PIPE PLUG-1/4" NPT
14	45772	4	HEX NUT-M10-1.5	52	A6701	1	HHCS-M10-1.5 X 110 LG.
15	99379	2	SHCS-5/16"-18 x 3" LG.	53	39414	1	HHCS-M8-1.25 X 35 LG.
16	20692	1	STARTER-12V	54	A5568	1	HHCS-M12-1.25 x 55 LG.
17	A7005	2	SPACER-ENGINE PLATE	55	51769	1	WASHER-LOCK-M12
18	52243	1	HHCS-M10-1.50 x 60 LG.	56	A4804	1	PULLEY-CRANKSHAFT (1800 RPM)
19	A4772	1	ENGINE PLATE		A4800	1	PULLEY-CRANKSHAFT (3600 RPM)
20	70901	2	DOWEL SLEEVE-BLOWER HOUSING	57	A5839	1	SUPPORT-DC ALTERNATOR
21	51735	3	HHCS-M10-1.50 x 70 LG.	58	A1354B	1	DC ALTERNATOR-12V
22	56768	2	HHCS-M10-1.50 x 90 LG.	59	A4839	1	BRACKET-ALTERNATOR ADJUSTMENT
23	22145	2	WASHER-FLAT-5/16"-M8	60	55816	4	HHCS-M6-1.0 x 70 LG.
24	22129	23	WASHER-LOCK-5/16"-M8	61	49811	4	WASHER-FLAT-1/4"-M6
25	22259	2	HEX NUT-5/16"-18	62	75614	1	FAN-RADIATOR
26	52213	1	HHCS-M10-1.25 x 20 LG.	63	A2628	1	PULLEY-FAN
27	47411	2	HHCS-M6-1.0 x 16 LG.	64	A5275	1	V-BELT (1800 RPM)
28	52830	2	HHCS-M10-1.25 x 45 LG.		A5586	1	V-BELT (3600 RPM)
29	46525	1	HEX NUT-M10-1.25	65	A4814	1	SPACER-FAN PULLEY
30	45771	10	HEX NUT-M8-1.25	66	244-A4531	1	FILTER-OIL
31	58306	5	SHCS-M8-1.25 X 25 LG.	67	C1852	1	ADAPTER-OIL DRAIN-M14 x 1.5
32	30795	2	HHCS-5/16"-18 x 1" LG.	69	70928	1	CLAMP-HOSE
33	A2711A	1	ADAPTER-THERMOSTAT	70	69860C	1	HOSE ASM.-OIL DRAIN
34	48665	1	GASKET, WATER OUTLET	71	69811	1	CAP-OIL DRAIN HOSE
35	75885	1	THERMOSTAT	72	A5317	1	NAME PLATE-ENGINE
36	257-A4531	1	GASKET-INTAKE MANIFOLD	73	22473	2	FLAT WASHER 1/4"-M6
37	A4682	1	MANIFOLD-INTAKE				
38	57522	1	SWITCH-WATER LEVEL				